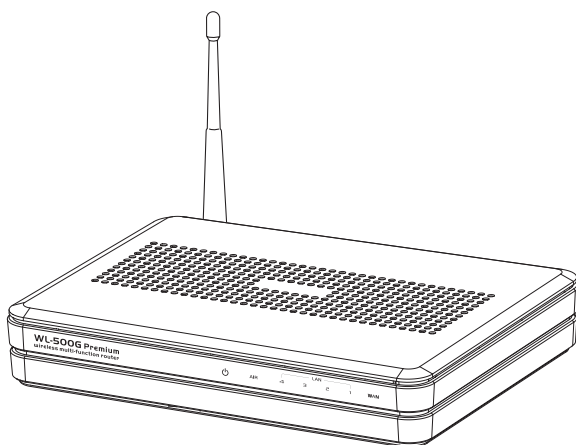




WL-500gP Wireless Router



User Manual

Manufacturer Contact Information

ASUSTeK COMPUTER INC. (Asia-Pacific)

Company address: 15 Li-Te Road, Beitou, Taipei 11259

General (tel): +886-2-2894-3447 Web site address: www.asus.com.tw

General (fax): +886-2-2894-7798 General email: info@asus.com.tw

ASUS COMPUTER INTERNATIONAL (America)

Company address: 44370 Nobel Drive, Fremont, CA 94538, USA

General (fax): +1-510-608-4555 Web site address: usa.asus.com

Technical support

General support: +1-502-995-0883 Support (fax): +1-502-933-8713

Online support: <http://vip.asus.com/eservice/techserv.aspx>

ASUS COMPUTER GmbH (Germany & Austria)

Company address: Harkort Str. 25, D-40880 Ratingen, Germany

General (tel): +49-2102-95990 Web site address: www.asuscom.de

General (fax): +49-2102-959911 Online contact: www.asuscom.de/sales

Technical support

Components: +49-2102-95990 Online support: www.asuscom.de/support

Notebook: +49-2102-959910 Support (fax): +49-2102-959911



Table of contents

1. Package contents	3
2. Connecting ADSL modem and wireless router	3
1) Cable connection	3
2) Status indicators	4
3) Wall mount option	4
3. Getting started	5
1) Wired connection	5
2) Wireless Connection	5
3) Setting IP address for wired or wireless client	5
4) Configuring the wireless router	6
5) Quick setup	7
4. Wireless router features	12
1) Choosing an appropriate operation mode	12
2) Setting up wireless encryption	13
3) Setting up virtual server in your LAN	14
4) Setting up virtual DMZ in your LAN	15
5) Setting up DDNS	15
6) Setting up Bandwidth Management	19
5. Application features	21
1) Sharing USB storage	21
2) Setting up FTP site	23
3) Download Master	24
4) Web camera	25
5) Sharing USB printer	28
6) Playing stream media on Xbox360	31
6. Setting up using ASUS utility	34
1) Utility Installation for WL-500gP	34
2) EZSetup	35



7. Troubleshooting	37
8. Appendix	39

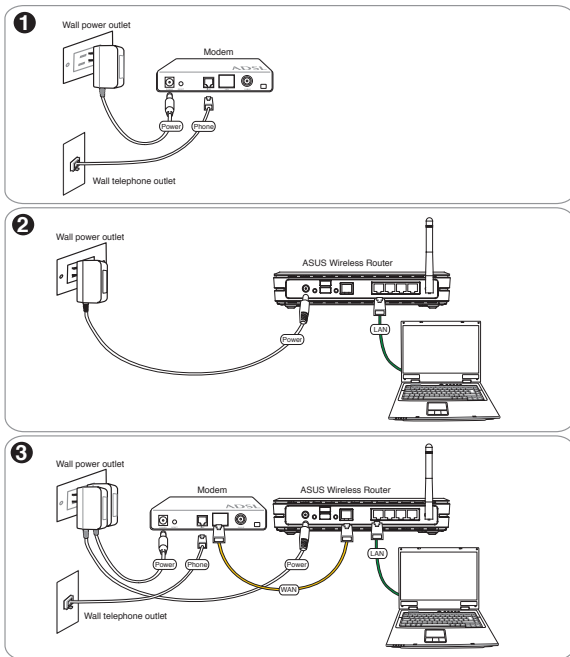


1. Package contents

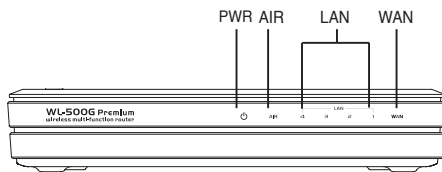
- WL-500gP wireless router x 1
- Power adapter x 1
- Utility CD x 1
- RJ45 cable x 1
- Quick Start Guide x 1

2. Connecting ADSL modem and wireless router

1) Cable connection



2) Status indicators



PWR (Power)

Off	No power
On	System ready
Flashing-slow	Firmware upgrade failed
Flashing-quick	EZsetup processing

AIR (Wireless Network)

Off	No power
On	Wireless system ready
Flashing	Transmitting or receiving data (wireless)

WAN (Wide Area Network)

Off	No power or no physical connection
On	Has physical connection to an Ethernet network
Flashing	Transmitting or receiving data (through Ethernet cable)

LAN 1-4 (Local Area Network)

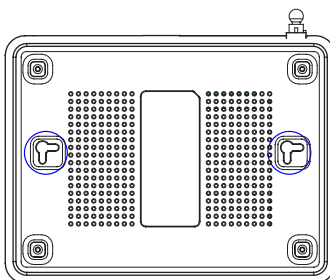
Off	No power or no physical connection
On	Has physical connection to an Ethernet network
Flashing	Transmitting or receiving data (through Ethernet cable)

3) Wall mount option

Out of the box, ASUS WL-500gP Wireless Router is designed to sit on a raised flat surface like a file cabinet or book shelf. The unit may also be converted for mounting to a wall or ceiling.

Follow these steps to mount the ASUS Wireless Router to a wall:

1. Look on the underside for the two mounting hooks.
2. Mark two upper holes in a flat surface.
3. Tighten two screws until only 1/4" is showing.
4. Latch the hooks of the ASUS Wireless Router onto the screws.



Note: Re-adjust the screws if you cannot latch the ASUS Wireless Router onto the screws or if it is too loose.



3. Getting started

The ASUS WL-500gP Wireless Router can meet various working scenarios with proper configuration. The default settings of the wireless router may need change so as to meet your individual needs. Therefore, before using the ASUS Wireless Router, check the basic settings to make sure they all work in your environment.

ASUS provides a utility named EZSetup for fast wireless configuration. If you would like to use EZSetup for your wireless network configuration, refer to chapter 6 for details.



Note: Wired connection for initial configuration is recommended to avoid possible setup problems due to wireless uncertainty.

1) Wired connection

The ASUS WL-500gP Wireless Router is supplied with an Ethernet cable in the package. Since the ASUS Wireless Router has integrated auto-crossover function, therefore, you can use either straight-through or crossover cable for wired connection. Plug one end of the cable to the LAN port on the rear panel of the router and the other end to the Ethernet port on your PC.

2) Wireless Connection

For establishing wireless connection, you need an IEEE 802.11b/g compatible WLAN card. Refer to your wireless adapter user manual for wireless connection procedures. By default, the SSID of ASUS Wireless Router is "default" (in lower case), encryption is disabled and open system authentication is used.

3) Setting IP address for wired or wireless client

To access WL-500gP Wireless Router, you must have correct TCP/IP settings on your wired or wireless clients. Set the IP addresses of the clients within the same subnet of WL-500gP.

Getting IP address Automatically

The ASUS Wireless Router integrates DHCP server functions, therefore, you can make your PC get IP address automatically from the ASUS Wireless Router.

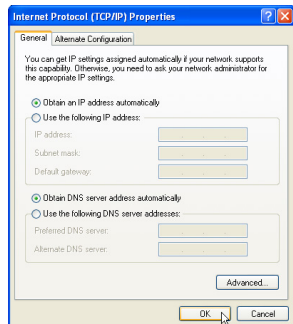


Note: Before rebooting your PC, switch ON the wireless router and make sure the router is in ready state.

Setting up IP address Manually

To set IP address manually, you need to know the default settings of the ASUS Wireless Router:

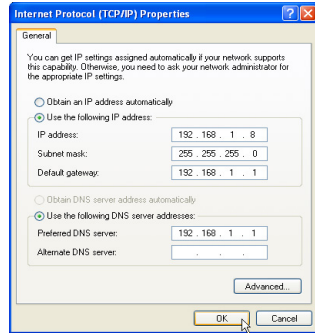
- IP address 192.168.1.1
- Subnet Mask 255.255.255.0





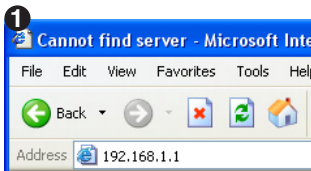
To set up the connection with a manually assigned IP address, the address of your PC and the wireless router must be within the same subnet:

- IP address: 192.168.1.xxx (xxx can be any number between 2 and 254. Make sure the IP address is not used by other device)
- Subnet Mask: 255.255.255.0 (same as WL-500gP)
- Gateway: 192.168.1.1 (IP address of WL-500gP)
- DNS: 192.168.1.1 (WL-500gP), or assign a known DNS server in your network.



4) Configuring the wireless router

Follow the steps below to enter the Web configuration interface of WL-500gP.



Enter the following address in your web browser: <http://192.168.1.1>



Defaults

User name: admin Password: admin



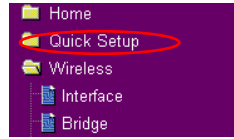
After logging in, you can see the ASUS Wireless Router home page.

The homepage displays quick links to configure the main features of the wireless router.



5) Quick setup

To start quick setup, click **Next** to enter the "Quick Setup" page. Follow the instructions to setup the ASUS Wireless Router.



1. Select your time zone and click **Next**.

Select Time Zone

Please choose the time zone where you are locating in.

Time Zone: GMT+8:00: Beijing, Hong Kong

Next

2. ASUS wireless router supports five types of ISP services: cable, PPPoE, PPTP, static WAN IP, and Telstra BigPond. Select your connection type and click **Next** to continue.

Select Internet Connection Type

ASUS Wireless Router supports several kinds of connection to Internet through its WAN port. Please select connection type you need. In addition, before getting on Internet, please make sure you have connected ASUS Wireless Router's WAN port to your DSL or Cable Modem.

Cable Modem or other connection type that gets IP automatically.

ADSL connection that requires username and password. It is known as PPPoE.

ADSL connection that requires username, password and IP address. It is known as PPTP.

ADSL or other connection type that uses static IP address.

Telstra BigPond Cable Modem Service.

Prev Next

Cable or dynamic IP user

If you are using services provided by cable ISP, select **Cable Modem or other connection that gets IP automatically**. If your ISP provides you hostname, MAC address, and heartbeat server address, fill these information into the boxes on the setting page; if not, click **Next** to skip this step.

Fill Information Required by ISP

Your ISP may require the following information to identify your account. If not, just press Next to ignore it.

Host Name:

MAC Address:

Heart-Beat Server:

Prev Next

WAN IP Setting

Fill TCP/IP setting for WL500gP to connect to Internet through WAN port.

Get IP automatically? Yes No

IP Address:

Subnet Mask:

Default Gateway:

Get DNS Server automatically? Yes No

DNS Server 1:

DNS Server 2:

Prev Next

PPPoE user

If you use PPPoE service, select **ADSL connection that requires username and password**. It is known as PPPoE. You need to input the username and password provided by your ISP. Click **Next** to continue.

Set Your Account to ISP

If you apply an account with dynamic IP. You must get user account and password from your ISP. Please fill this data into the following fields carefully. Or, if you apply an ADSL account with static IP, just ignore user name and password information.

User Name: jso@hinet.net

Password:

Prev Next



PPTP user

If you are using PPTP services, select **ADSL connection that requires username, password and IP address**. Fill in the username, password and IP address provided by your ISP into the fields. Click **Next** to continue.

Set Your Account to ISP	
If you apply an account with dynamic IP. You must get user account and password from your ISP. Please fill this data into the following fields carefully. Or, if you apply an ADSL account with static IP, just ignore user name and password information.	
User Name:	herk036@adsl-comfort
Password:	*****
<input type="button" value="Prev"/> <input type="button" value="Next"/>	

WAN IP Setting	
Fill TCP/IP setting for WL500gP to connect to Internet through WAN port.	
Get IP automatically?	<input type="radio"/> Yes <input checked="" type="radio"/> No
IP Address:	219.31.111.12
Subnet Mask:	255.255.255.0
Default Gateway:	219.31.111.1
Get DNS Server automatically?	<input type="radio"/> Yes <input checked="" type="radio"/> No
DNS Server 1:	168.95.1.1
DNS Server 2:	
<input type="button" value="Prev"/> <input type="button" value="Next"/>	

Static IP user

If you are using ADSL or other connection type that uses static IP address, select **ADSL or other connection type that uses static IP address**. Input the IP address, subnet mask, and default gateway provided by your ISP. You can specify DNS servers, or get DNS information automatically.

WAN IP Setting	
Fill TCP/IP setting for WL500gP to connect to Internet through WAN port.	
Get IP automatically?	<input type="radio"/> Yes <input checked="" type="radio"/> No
IP Address:	219.31.111.12
Subnet Mask:	255.255.255.0
Default Gateway:	219.31.111.1
Get DNS Server automatically?	<input type="radio"/> Yes <input checked="" type="radio"/> No
DNS Server 1:	168.95.1.1
DNS Server 2:	
<input type="button" value="Prev"/> <input type="button" value="Next"/>	

3. After the connection type setting is complete, you are to set up your wireless interface. Specify to your wireless router an SSID (Service Set Identifier), which is a unique identifier attached to packets sent over WLAN. This identifier emulates a password when a device attempts to communicate with your wireless router via WLAN.

Configure Wireless Interface	
First step to set your wireless interface is to give it a name, called SSID. In addition, if you would like to protect transmitted data, please select the Security Level and assign a password for authentication and data transmission if it is required.	
SSID:	WL500gP
Security Level:	Low(None)
Passphrase:	Low(None) Medium(WEP-64bit) Medium(WEP-128bit) High(WPA-PSK)
WEP Key 1 (10 or 26 hex digits):	*****
WEP Key 2 (10 or 26 hex digits):	*****
WEP Key 3 (10 or 26 hex digits):	*****
WEP Key 4 (10 or 26 hex digits):	*****
Key Index:	1
<input type="button" value="Prev"/> <input type="button" value="Finish"/>	

If you want to protect transmitted data, select a **Security Level** to enable encryption methods.

Medium: Only users with the same WEP key settings can connect to your wireless router and transmit data using 64bits or 128bits WEP key encryption.

High: Only users with the same WPA pre-shared key settings can connect to your wireless router and transmit data using TKIP encryption.



- Input four sets of WEP keys in the WEP Key fields (10 hexadecimal digits for WEP 64bits, 26 hexadecimal digits for WEP 128bits). You can also let the system generate the keys by inputting a Passphrase. Record the Passphrase and the WEP keys in your notebook, then click **Finish**.

For example, if we select WEP 64bits encryption mode and input 11111 as the Passphrase, the WEP Keys are generated automatically.

- Click **Save&Restart** to restart the wireless router and activate the new settings.
- Connect to the wireless router via wireless

To connect the wireless router from a wireless client, you can use Windows® Wireless Zero Configuration service to set up the connection. If you use ASUS Wireless Card on your computer, you can use the One Touch Wizard utility supplied in WLAN Card support CD for wireless connection.

Configuring ASUS WLAN Card with One Touch Wizard

If you have installed ASUS wireless card together with its utilities and drives on your PC, click **Start -> Programes -> ASUS Utility-> WLAN Card -> One Touch Wizard** to launch the One Touch Wizard utility.

Configure Wireless Interface

First step to set your wireless interface is to give it a name, called SSID. In addition, if you would like to protect transmitted data, please select the Security Level and assign a password for authentication and data transmission if it is required.

SSID:

Security Level:

Passphrase:

WEP Key 1 (10 or 26 hex digits):

WEP Key 2 (10 or 26 hex digits):

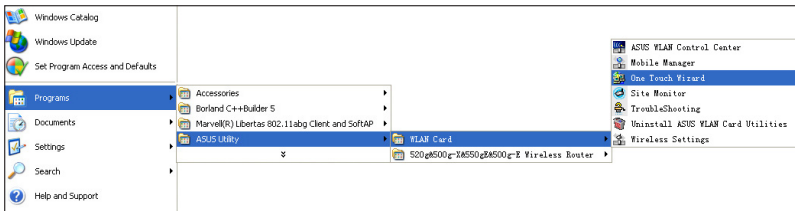
WEP Key 3 (10 or 26 hex digits):

WEP Key 4 (10 or 26 hex digits):

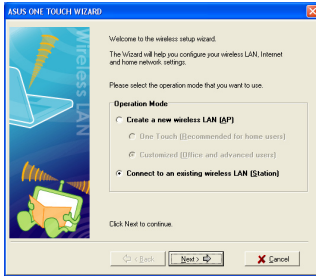
Key Index:

Save & Restart

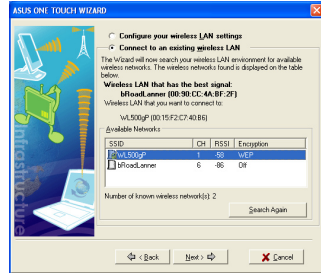
You have finished the basic setting. You can just press **Save&Restart** button to apply your setting or perform other advanced settings.



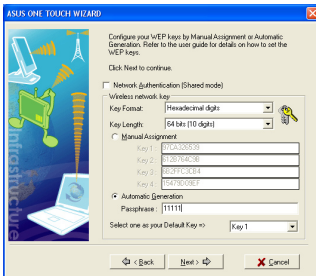
- 1) Select **Connect to an existing wireless LAN (Station)** radio button and click **Next** to continue.



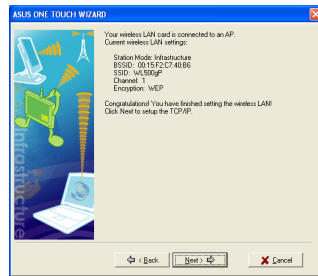
- 2) One Touch Wizard searches and displays the available APs in the **Available Networks** list. Select **WL-500gP** and press **Next** to continue.



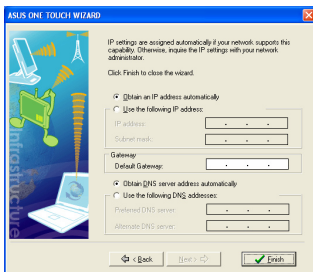
- 3) Set the authentication and encryption of your WLAN card the same with those at WL-500gP. In the previous steps the **Key Length is 64 bits**, **Passphrase is 11111**. Click **Next** to continue.



- 4) It takes several seconds for the wireless card to associate with WL-500gP. Press **Next** to setup TCP/IP for your WLAN Card.



- 5) Setup the IP address of the WLAN Card according to your network condition. After the setup is complete, click **Finish** to exit the One Touch Wizard.

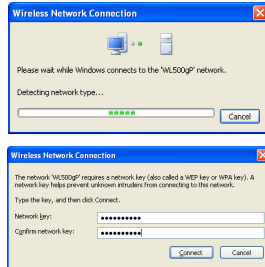
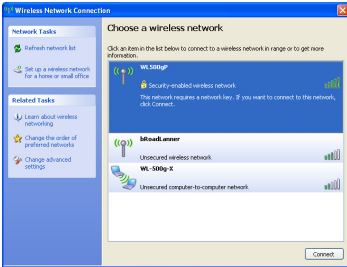




Configuring WLAN card with Windows® WZC service

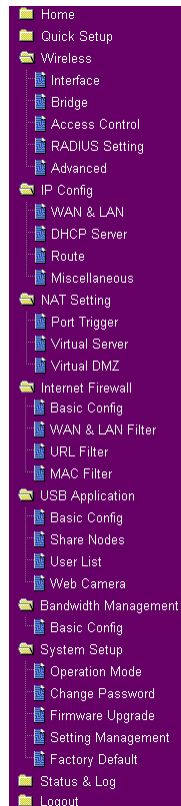
If you use non-ASUS wireless card, you can set up the wireless connection with Windows® Wireless Zero Configuration (WZC) service.

- 1) Double-click the wireless network icon on the task bar to view available networks. Select your wireless router and click **Connect**.
- 2) Input the 10-digit keys you have set on the wireless router and click **Connect**. The connection is complete within several seconds.



7. Configuring advanced features

To view and adjust other settings of the wireless router, enter the Web configuration page of WL-500gP. Click on items on the menu to open a submenu and follow the instructions to setup the router. Tips show up when you move your cursor over each item.

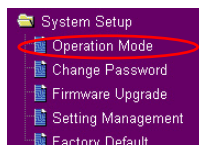


4. Wireless router features

This chapter provides setup examples of some frequently used router features. You can setup these features via your Web browser.

1) Choosing an appropriate operation mode

ASUS WL-500gP Wireless Router supports three operation modes: home gateway, router, and access point. Click **System Setup** -> **Operation mode** to open the configuration page.



Home gateway mode is for home or SOHO users who want to connect to their ISPs for Internet services. In this operation mode, NAT, WAN connection, Internet firewall functions are supported.

Router mode is for office use where multiple routers and switches co-exist. You can set up routing policies in this mode; however, NAT function is disabled.

Access point mode works when you setup WL-500gP as a wireless bridge. In this mode, all Ethernet ports on WL-500gP (4 LAN ports and 1 WAN port) are recognized as LAN ports. WAN connection, NAT, and Internet firewall functions are disabled in access point mode.

Select a proper mode which complies to your network senario and press **Apply** button, and then you can continue to setup advanced features for your WL-500gP.

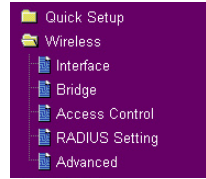
System Setup - Operation Mode	
ASUS Wireless Router supports three operation modes to meet different requirements from different group of people. Please select the mode that match your situation.	
<input checked="" type="radio"/> Home Gateway	<p>In this mode, we suppose you use ASUS Wireless Router to connect to Internet through ADSL or Cable Modem. And, there are many people in your environment share the same IP to ISP.</p> <p>Explaining with technical terms, gateway mode is , NAT is enabled, WAN connection is allowed by using PPPoE, or DHCP client, or static IP. In addition, some features which are useful for home user, such as UPnP and DDNS, are supported.</p>
<input type="radio"/> Router	<p>In Router mode, we suppose you use ASUS Wireless Router to connect to LAN in your company. So, you can set up routing protocol to meet your requirement in office.</p> <p>Explaining with technical terms, router mode is, NAT is disabled, static routing protocol are allowed to set.</p>
<input type="radio"/> Access Point	<p>In Access Point mode, all 5 Ethernet ports and wireless devices are set to locate in the same local area network. Those WAN related functions are not supported here.</p> <p>Explaining with technical terms, access point mode is, NAT is disabled, one wan port and four lan ports of ASUS Wireless Router are bridged together.</p>
<input type="button" value="Apply"/>	



2) Setting up wireless encryption

WL-500gP provides a set of encryption and authentication methods to meet the different demands of home, SOHO, and enterprise users. Before setting up encryption and authentication for WL-500gP, contact your network administrator for advice.

Click **Wireless -> Interface** to open the configuration page.



Wireless - Interface	
SSID:	WL500gP
Channel:	Auto
Wireless Mode:	Auto <input type="checkbox"/> 54g Protection
Authentication Method:	WPA
WPA Encryption:	TKIP
WPA Pre-Shared Key:	*****
WEP Encryption:	WEP-64bits
Passphrase:	
WEP Key 1 (10 or 26 hex digits):	*****
WEP Key 2 (10 or 26 hex digits):	*****
WEP Key 3 (10 or 26 hex digits):	*****
WEP Key 4 (10 or 26 hex digits):	*****
Key Index:	2
Network Key Rotation Interval:	0
<input type="button" value="Restore"/> <input type="button" value="Finish"/> <input type="button" value="Apply"/>	

Encryption

The encryption modes supported by WL-500gP are: WEP (64bits), WEP (128bits), TKIP, AES, and TKIP+AES.

WEP stands for Wired Equivalent Privacy, it uses 64bits or 128bits static keys to encrypt the data for wireless transmission. To setup WEP keys, set **WEP Encryption** to **WEP-64bits** or **WEP-128bits**, then manually type in four sets **WEP Keys** (10 hexadecimal digits for 64-bit key or 26 hexadecimal digits for 128-bit key). You can also let the system generate the keys by entering a **Passphrase**.

TKIP stands for Temporal Key Integrity Protocol. TKIP dynamically generates unique keys to encrypt every data packet in a wireless session.

AES stands for Advanced Encryption Standard. This solution offers stronger protection and increases the complexity of wireless encryption.

TKIP+AES is used when both WPA and WPA2 clients co-exist in the wireless network.



Authentication

The authentication methods supported by WL-500gP include: Open, shared key, WPA-PSK, WPA, and Radius with 80.211x.

Open: This option disables authentication protection for wireless network. Under Open mode, any IEEE802.11b/g client can connect to your wireless network.

Shared: This mode uses the the WEP keys currently in use for authentication.

WPA and WPA-PSK: WPA stands for WiFi-Protected Access. WPA provides two security modes: WPA for enterprise network, and WPA-PSK for home and SOHO users. For enterprise network, WPA uses the already existing RADIUS server for authentication; for home and SOHO user, it provides Pre-Shared Key (PSK) for user identification. The Pre-Shared Key consists of 8 to 64 characters.

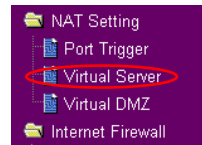
Radius with 802.11x: Similar with WPA, this solution also uses RADIUS server for authentication. The difference lays on the encryption methods: WPA adopts TKIP or AES encryption methods, while Radius with 802.11x does not provide encryption.

When authentication and encryption are set, click **Finish** to save the settings and restart the wireless router.

3) Setting up virtual server in your LAN

Virtual server is a Network Address Translation (NAT) function which turns a computer within a LAN into a server by allowing data packets of certain service, such as HTTP, from Internet.

1. Click **Virtual Server** in NAT Setting folder to open the NAT configuration page.



2. Select **Yes** to enable virtual server. For example, if host 192.168.1.100 is FTP server which is to be accessed by Internet user, it means all packets from Internet with destination port as 21 are to be directed to the host. Set Well-known Application to FTP. Port range to 21, Local IP to the host IP, Local Port to 21, Protocol to TCP.

NAT Setting - Virtual Server

To make services, like WWW, FTP, provided by a server in your local network accessible for outside users, you should specify a local IP address to the server. Then, add the IP address and network protocol type, port number, and name of the service in the following list. Based on the list, the gateway will forward service request from outside users to the corresponding local server.

Enable Virtual Server? Yes No

Virtual Server List Add Del

Well-Known Applications:

Port Range	Local IP	Local Port	Protocol	Description
21	192.168.1.100	21	TCP	FTP Server (21)

3. Click **Finish**.

Restore Finish Apply

4. Click **Save & Restart** to restart the wireless router and activate the settings.

Save & Restart

Save&Restart will save all setting you have changed to ASUS Wireless Router and restart it. Please click **Save&Restart** button to continue.

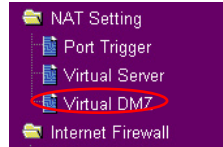
Save&Restart



4) Setting up virtual DMZ in your LAN

To expose an internal host to Internet and make all services provided by this host available to outside users, enable Virtual DMZ function to open all ports of the host. This function is useful when the host plays multiple roles such as HTTP server and FTP server. However, in doing this, your network becomes less secure.

1. Click **Virtual DMZ** in the NAT Setting menu.



2. Enter the IP address of the host and click **Finish**.

NAT Setting - Virtual DMZ

Virtual DMZ allows you to expose one computer to Internet, so that all the inbounds packets will be redirected to the computer you set. It is useful while you run some applications that use uncerntained incoming ports. Please use it carefully.

IP Address of Exposed Station:

3. Click **Save & Restart** to restart the wireless router and activate the settings.

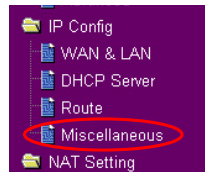
Save & Restart

Save&Restart will save all setting you have changed to ASUS Wireless Router and restart it. Please click **Save&Restart** button to continue.

5) Setting up DDNS

DNS enables host who uses static IP address to associate with a domain name; for dynamic IP user, they can also associate with a domain name via dynamic DNS (DDNS). DDNS requires registering and account-creating at DDNS service providers' website. The DDNS server updates your IP address information once you are assigned to a new IP address. Therefore, Internet user can always access your network.

1. Click **Miscellaneous** from IP Config folder.



2. Select **Yes** to enable the DDNS service. If you do not have a DDNS account, click **Free Trial** to register for a trial account.

DDNS Setting

Dynamic-DNS (DDNS) allows you to export your server to Internet with a unique name, even though you have no static IP address. Currently, several DDNS clients are embedded in WLS566M. You can click Free Trial below to start with a free trial account.

Enable the DDNS Client? Yes No

Server:



3. After clicking Free Trial, you are directed to the homepage of www.DynDNS.org, where you can register and apply for DDNS service.

Read the policy and select "I have read...".

4. Enter your user name, e-mail address, password, then click **Create Account**.

5. A message prompts out informing that your account has been created. An E-mail is sent to your mailbox. Open your mailbox and read the mail.

6. You can find the activation letter in your E-mail box. Click the hyperlink.

7. The link directs you to a login page. Click **login**.

8. Enter the user name and password then click **Login**.



9. After logging in, you can see this welcome message.

Logged In

You are currently logged in as: account ([Logout](#))

10. Select **Services** tab.

Logged in from WL500gP
My Account - Settings - Log Out

About
Services
Account
Support
News

Services

DNS Services

Domain Registration

Mail Services

Network Monitoring

Web Redirection

Account Upgrades

Pricing

Services

DynDNS provides a variety of services that help enhance your home or business Internet experience. We offer superior domain name services (DNS), high quality domain management, world-class e-mail services, web redirection, and network monitoring. All of our services include free technical support by e-mail or phone where you speak to a highly trained engineer rather than a call center reading a script off of a screen.

DNS Services

- Custom DNS - Our flagship DNS management tool for your own domain
- Secondary DNS - Add reliability to your own name servers
- Recursive DNS - Ensure DNS resolution for your DNS games
- Dynamic DNS - A free DNS service for those with dynamic IP addresses
- Static DNS - A free DNS service for those with static IP addresses
- TLD DNS - DNS for operators of cURLDs and gTLDs

Domain Registration

- Domain Registration - Register new domains
- Domain Transfer - Escape poor quality bulk sellers

11. Click **Add Dynamic DNS Host**.

My Account

My Services

Account Upgrades

MailHop Outbound

Recursive DNS

SLA

Premier Support

My Zones

Add Zone Services

Add Host Services

Dynamic DNS

Static DNS

WebHop

MyWebHop

Network Monitoring

Account Settings

Billing

Add Host Services

Dynamic DNS (?)	Add Dynamic DNS Host
Static DNS (?)	Add Static DNS Host
WebHop (?)	Add WebHop
MyWebHop (?)	Add MyWebHop
Network Monitoring (?)	Add Network Monitoring

12. Enter the host name then click **Add Host**.

New Dynamic DNSSM Host

Hostname:	account	(dyn dns.org)
IP Address:	210.74.250.126	
Enable Wildcard:	<input type="checkbox"/>	
Mail Exchanger (optional):	<input type="checkbox"/> Backup MX?	
Add Host Reset Form		

13. You can see this message when your hostname is successfully created.

Hostname Created

The hostname you have requested has been created. The information now in the database and DNS system is:

Hostname:	account.dyn dns.org
IP Address:	210.74.250.126
Wildcard:	N
Mail Exchanger:	None
Backup MX:	N



- 14. Fill the account information into the DDNS setting fields of your wireless router.

DDNS Setting	
Dynamic-DNS (DDNS) allows you to export your server to Internet with a unique name, even though you have no static IP address. Currently, several DDNS clients are embedded in WL556gM. You can click Free Trial below to start with a free trial account.	
Enable the DDNS Client?	<input type="radio"/> Yes <input checked="" type="radio"/> No
Server:	WWW.DYDNS.ORG Free Trial
User Name or E-mail Address:	account
Password or DDNS Key:	*****
Host Name:	account.dydns.org
Enable wildcard?	<input type="radio"/> Yes <input checked="" type="radio"/> No
Update Manually:	<input type="button" value="Update"/>

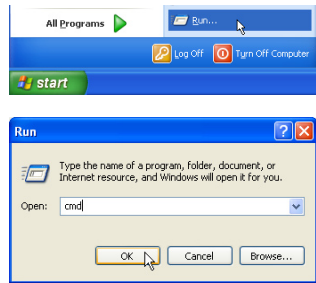
- 15. Click **Finish**.

<input type="button" value="Restore"/>	<input type="button" value="Finish"/>	<input type="button" value="Apply"/>
--	---------------------------------------	--------------------------------------

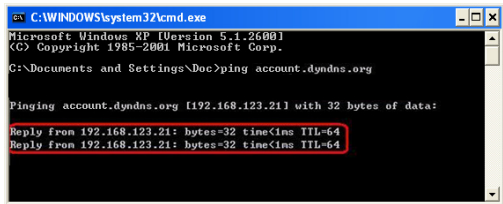
- 16. Click **Save & Restart** to restart the wireless router and activate the settings.

Save & Restart
Save&Restart will save all setting you have changed to ASUS Wireless Router and restart it. Please click Save&Restart button to continue.
<input type="button" value="Save&Restart"/>

- 17. Verify whether DDNS is working. Click **Start** menu and select **Run....**Type **cmd** and click **OK** to open the CLI console.



- 18. Type **ping account.dydns.org** (your DDNS domain name). If you can see the reply like what is shown in the right picture, DDNS is working correctly.

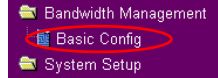




6) Setting up Bandwidth Management

Bandwidth Management provides a mechanism to setup download and upload bandwidth based on IP address and port range. You can define the minimum bandwidth and maximum bandwidth for host within your LAN, and therefore control the traffic of you network. To set up upload bandwidth management, you need first setup virtual server to allow the incoming packets of the specified services.

1. Click **Basic Config** page in Bandwidth Management folder.



2. Select **Yes** to enable Bandwidth Management function.

Bandwidth Management- Basic Config

Bandwidth Management allows you to control the bandwidth for different applications.

Enable Bandwidth Management? Yes No

3. **Download bandwidth**

If you want to limit the download bandwidth of a host within a speed range, for example, between 100 to 200kbps, you need to fill in the host IP address, the speeds (maximum: 200kbps; minimum: 100kbps). When the minimum speed is defined, the host can transmit data at the minimum speed regardless of the traffic conditions.

- 1).To apply on all host an **FTP** download speed policy, leave the IP address field blank, input "20" in the **Port** field and define the speeds, then click **Add**.

Download Policy List Add Del

IP Address	Port	Max.(kbps)	Min.(kbps)
	20	100	50
192.168.1.6		200	100

- 2).To set up **Web** access download policy, input "80" in the **Port** field, define the speeds and click **Add**.

Download Policy List Add Del

IP Address	Port	Max.(kbps)	Min.(kbps)
	80	300	100
192.168.1.6	20	200	100
		100	50

- 3).To set up download bandwidth policy of a certain service for a host, input the host IP address and the port number of the service, define the speeds and click **Add**.

Download Policy List Add Del

IP Address	Port	Max.(kbps)	Min.(kbps)
192.168.1.100	3702	10	
192.168.1.6		200	100
	20	100	50
	80	300	100

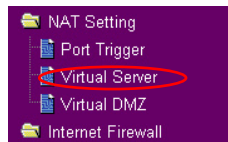


4).To set up download bandwidth policy for the all hosts in your LAN, leave the IP address and port fields blank, define the speeds (the speeds are higher than download policies). Click **Add** to add the rule.

Download Policy List			
IP Address	Port	Max.(kbps)	Min.(kbps)
		500	200
192.168.1.6		200	100
	20	100	50
	80	300	100
192.168.1.100	3702	10	

4. Upload stream

If you want to set up upload traffic control policy, for example, to limit the upload bandwidth of port 2100 of 192.168.1.2 between 10 to 80kbps, You need first set up NAT policy to allow incoming packets.



1).Select **Yes** to enable Virtual Server function. In the Virtual Server List field, fill the port, IP address into the fields and press **Add**.

NAT Setting - Virtual Server

To make services, like WWW, FTP, provided by a server in your local network accessible for outside users, you should specify a local IP address to the server. Then, add the IP address and network protocol type, port number, and name of the service in the following list. Based on the list, the gateway will forward service request from outside users to the corresponding local server.

Enable Virtual Server? Yes No

Virtual Server List
Add
Del

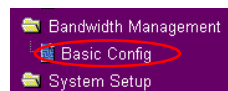
Well-Known Applications: User Defined

Port Range	Local IP	Local Port	Protocol	Description
2100	192.168.1.2	2100	TCP	

2).Press **Apply** button.

Restore
Finish
Apply

3).Return to the Upload Policy List in Bandwidth Management setting page.



4).Set the **Port** as "2100", **Max (kbps)** as "80", **Min.(kbps)** as "10", then click **Add**.

Upload Policy List			
Port	Max.(kbps)	Min.(kbps)	
2100	80	10	

5. When the settings are complete, press **Finish**.

Restore
Finish
Apply

6. Click **Save & Restart** to restart the wireless router and activate the settings.

Save & Restart

Save&Restart will save all setting you have changed to ASUS Wireless Router and restart it. Please click **Save&Restart** button to continue.

Save&Restart



5. Application features

ASUS WL-500gP Wireless Router provides two USB2.0 ports for connecting USB storage, USB camera, and USB printer, therefore, you can monitor the working environment, share data and printer with both wired and wireless users in your network. Furthermore, WL-500gP provides a download utility - Download Master to facilitate and share the download files.



Warning: Before unplugging the USB storage disk from WL-500gP, you must eject the disk in **Status & Log -> External USB Disk** page to prevent data corruption.



Note: Before applying change and rebooting WL-500gP, make sure all USB applications are disabled, it would take more than 20 seconds for WL-500gP to reboot.

1) Sharing USB storage

To use this feature, you need to plug a USB hard disk to the USB2.0 port on the rear panel of WL-500gP. Make sure the hard disk is formatted and partitioned properly.

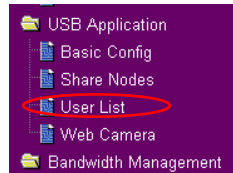


Note: FAT32 has a 2GB file size limitation and do not support files above that size. If you want to use files of above 2GB, you must format the disk to EXT2 file system.

Creating user account

To share the data in the USB storage, you need to create user accounts first.

1. Click **USB Application -> User List** in the left side menu to open the configuration page.
2. Input **User Name** and **Password** for the accounts. Click **Add** to add the account to the list.
3. To delete an account, select the account from the list and click **Del**.
4. Click **Apply** to apply the changes and restart the wireless router.

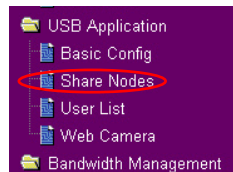


USB Application - User List		Add	Del
User Name	Password		
user3	pass3		
user1	pass1		
user2	pass2		
		Restore	Finish
			Apply

Creating share folder and access right

You can create a new share folder or share an existing folder in your hard disk.

1. Click **USB Application -> Share Nodes** in the left side menu to open the configuration page.





- Click **Add** to add a share folder.

Share Nodes List	Add	Del	Edit
ASUS Wireless Router supports the shared folders with "Path" not exceeding 32 letters and "Shared Name" not exceeding 16 letters.			

- Select the folder you want to share from Folder Manager and click **OK**. To create a share folder, input the folder name in **Add Folder** field and press **Add**.

- Define the access right for the share folder by appoint **User Name** and **Access Right**. Click **Add** to add the access right rule. When finished, click **Apply** to save the configuration.

User Right List		Add	Del	Modify
User Name	Access Right			
<input type="text" value="Guest"/> <input type="text" value="user1"/> <input type="text" value="user2"/> <input type="text" value="userG"/>	<input type="radio"/> Read Only <input type="radio"/> Read-Write			
		<input type="button" value="Apply"/>		

- Set Network Neighbourhood Mode to **Apply rules in shared node list**, Work Group to **WORKGROUP** to enable all computers within WORKGROUP to access WL-500gP USB storage.

USB Application - Share Nodes	
Network Neighbourhood Mode:	<input type="text" value="Apply rules in shared node list"/>
Device Name:	<input type="text" value="WL500g Premium"/>
Work Group:	<input type="text" value="WORKGROUP"/>
FTP Mode:	<input type="text" value="Disable"/>
Maximum Login User:	<input type="text" value="2"/>
Initial Script:	<input type="text"/>

- Click **Finish**.

<input type="button" value="Restore"/>	<input style="border: 2px solid red;" type="button" value="Finish"/>	<input type="button" value="Apply"/>
--	--	--------------------------------------

- Click **Save & Restart** to restart the wireless router and activate the settings.

Save & Restart
Save&Restart will save all setting you have changed to ASUS Wireless Router and restart it. Please click Save&Restart button to continue.
<input type="button" value="Save&Restart"/>

- Open **My Network Place** from a computer connected to WL-500gP. Click **view work group computers**, you can see WL-500gP in the **Workgroup** category. All files on the USB storage are ready for sharing.



2) Setting up FTP site

WL-500gP can also serve as an FTP site. You can make your FTP site accessible by all users, or set up access policy to restrict anonymous login. To use this feature, you need to plug a USB storage disk to the USB2.0 port on the rear panel of WL-500gP. Make sure the hard disk is formatted and partitioned properly.

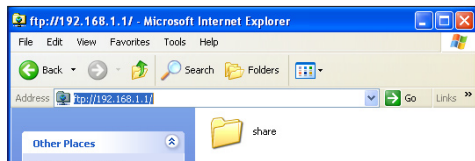
1. To allow anonymous login: Set Network Neighbourhood Mode to **Share all partitions in disk**, FTP Mode to **Login to first partition**. The anonymous login directory is the root directory of first partition.

To allow account login only: Set Network Neighbourhood Mode to **Apply rules in shared node list**, FTP Mode to **Login to first mached shared node**. Click **Add** in the Share Node List to specify the access directory and access right of FTP account.

2. The **Maximum Login User** field specifies the maximum logged in users at a same time. The default value is 6.

3. Click **Finish** to activate the settings and reboot. This process may take several minutes.

4. Type **ftp://192.168.1.1** into the address box of your Web browser and press Enter to login the FTP site.



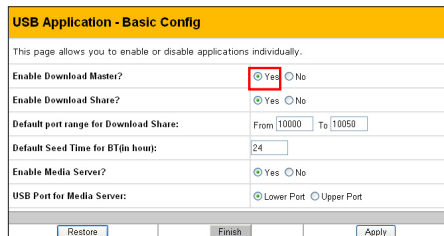
3) Download Master

Download Master function helps to manage the download tasks without turning your computer on. To use this function, you need to mount a USB storage to WL-500gP Wireless Router. To use this function, you need to install ASUS Utilities from the support CD. Refer to chapter 6 for utility installation procedures.

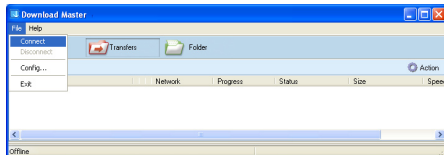
1. Click **Basic Config** page in USB Application folder.



2. Set **Enable Download Master** to **Yes**. If you want to share the downloaded file with your LAN users, set **Enable Download Share** to **Yes**. Click **Finish** and save and restart the wireless router.

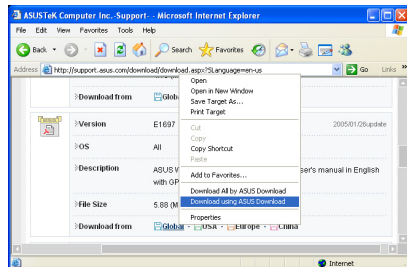


3. Open Download Master from Start -> All Programs -> ASUS Utility -> WL-500gP Wireless Router -> Download Master. Click **File -> Connect** to associate with WL-500gP.



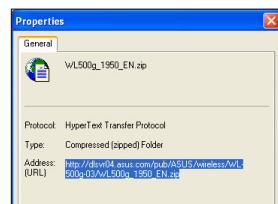
4. **HTTP download (1)**

Right click the download link on the Web page and click **Download using ASUS Download**. A window in step 5 appears to indicate download progress.



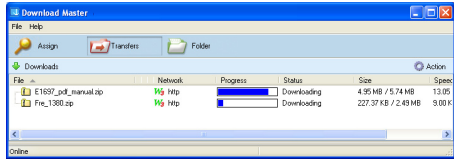
- HTTP download (2)**

Right click the download link on the Web page and click **Properties**. Copy the download **Address (URL)**.





If you select **Download using ASUS Download**, you can see the download task is added to the **Transfer** list. The blue bars indicate the progress of download tasks.

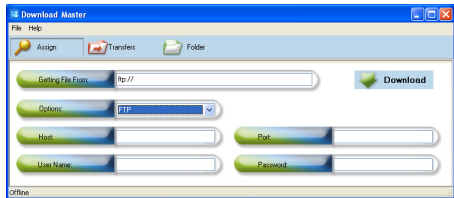


If you copy the download address, click **Assign** button in the utility. Paste the address into **Getting File From** box, select **HTTP** from **Options**, and click **Download** button to start.



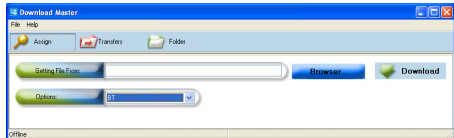
5. FTP download

Click **Transfer** button of the Download Master and select **FTP** in the **Options** field. Input the FTP site address, Port number, User Name, Password. Click **Download** to start.

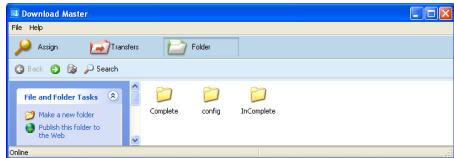


6. BT download

Save the BT seed on your computer. Click **Transfer** button of the Download Master and select **BT** in the **Options** field. Click **Browse** to locate the seed file. Click **Download** to start.



7. Click **Folder** button to view the download file. Open the **Complete** folder to view or copy the finished files to your local hard disk. The unfinished tasks are kept in **InComplete** folder.



4) Web camera

The ASUS Wireless Router implements several applications for a USB Web camera, enabling you to capture images and send them over the Internet. For this function, you need to plug a USB camera onto WL-500gP and enable ActiveX for your Web browser.



Web camera

1. Click **Web Camera** page in USB Application folder.
2. **Enable Web Camera** - Selecting LAN Only enables Web Camera for LAN users. Selecting LAN and WAN enables Web Camera for both LAN users and WAN users through firewall.

Web Camera Mode - Select the appropriate camera mode from the drop down list. ActiveX Only enables user to execute ActiveX clients on an Windows® IE platform and get the best image quality. ActiveX and Refresh enables user to get a basic image on both IE and other browsers. Refresh Only provides to all users still images which are refreshed in a specified interval.

USB Application - Web Camera	
Enable Web Camera?	LAN Only
Web Camera Mode:	ActiveX and Refresh
Web Camera Drivers:	PWC 8.8
Image Size:	320 X 240 Preview
Sense Level:	Medium
Refresh Time in seconds:	1
Caption String:	Web Camera Live Demoll
HTTP Port:	7776 <input type="checkbox"/> Password Checking
ActiveX Port:	7777

Web Camera Driver - When you plug a supported Web Camera into the USB2.0 port in the wireless router, the appropriate driver is selected automatically. Refer to the USB Web Camera support list on ASUS Website (www.asus.com) for supported Web Camera models.

Image Size - Select the image size from the drop down list. 320 x 240 provides a larger image while 160 x 120 provides faster transmission. Click Preview to see the effect.

Sense Level - This field indicates the sensitivity at which image movement is detected.

Refresh Time in Seconds - This field indicates the time interval in seconds in which the system reloads images. The range of values is 1~65535.

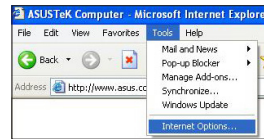
HTTP Port - This field indicates the port that HTTP server listens on to communicate. For example, by default, you can connect to your web camera by using <http://192.168.1.1:7776> without password checking. (The password checking field is unchecked.)

ActiveX Port - This field indicates the port that server listens on to communicate with ActiveX clients.

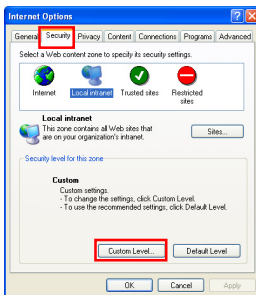
Enabling ActiveX for your IE

If you use Internet Explorer®, you need to enable ActiveX or the Web Camera cannot function properly. For clients using Netscape or other browsers, ignore this part.

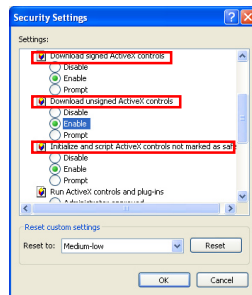
1. Open Internet Explorer 5.0 or above on your computer, click **Tools -> Internet Options**.



3. Select **Security** tab and click **Custom Level** button.

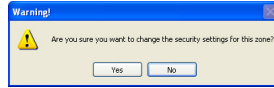
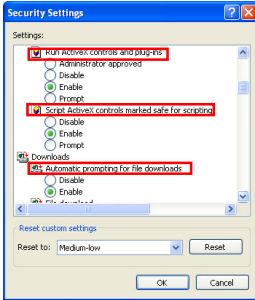


4. Enable the activeX controls and plug-ins. By default, these items are disabled.





- By default, these three items are enabled. Enable them if changed.
- Click **Yes** to change the security settings.



Enable Web Camera to WAN users

With proper setting to DDNS, you can monitor your working environment from anywhere on Internet, even if dynamic WAN IP address is used. If any motion is detected by the camera, WL-500gP captures the images and send them to your appointed E-mail box. Refer to page 15-17 for DDNS setup procedures.

- Enable Security Mode?** -Select Yes to enable security function on the data and time you set below.

Date to Enable Security Mode - This field defines the date that Security Mode is enabled.

Time to Enable Security Mode - This field defines the time interval that Security Mode is enabled.

Security Mode Setting	
This function allows you to monitor your environment through Web Camera. If there is any motion detected, ASUS Wireless Router will try to alert you by means of e-mail.	
Enable Security Mode?	<input type="radio"/> Yes <input checked="" type="radio"/> No
Date to Enable Security Mode:	<input checked="" type="checkbox"/> Sun <input checked="" type="checkbox"/> Mon <input checked="" type="checkbox"/> Tue <input checked="" type="checkbox"/> Wed <input checked="" type="checkbox"/> Thu <input checked="" type="checkbox"/> Fri <input checked="" type="checkbox"/> Sat
Time to Enable Security Mode:	00 : 00 : 23 : 59
Send to:	
Email Server:	
Subject:	Motion detection alert!!!
Attach Image File?	<input checked="" type="radio"/> Yes <input type="radio"/> No

Send to - Input the E-mail address you wish WL-500gP send the image to.

Email Server - This field indicates the E-mail server you use for exchanging E-mail. If you leave this field blank, WL-500gP uses the mail server of your E-mail address in **Send to** field.

Subject - This field is for the subject of E-mail.

Attach Image File? - This field allows you to attach the captured image in the E-mail.

Remote monitors

This function allows you to monitor up to 6 Web Cameras in your LAN. You can enter the IP addresses of other ASUS Wireless Routers which have Web Camera attached.



Note: When enabling "LAN and WAN" remote control in the Wireless Router, packets from Internet with destination ports 8081 to 8086 will be forwarded to WL-500gP in Remote Control fields. To makes sure packets from WL-500gP are routed back to Internet, you need to set a static route entry for WL-500gP. The IP address and gateway address are same as the address of WL-500gP.



Remote Site 1-6 - This field stands for the IP address and port number of Remote Site. The value of this field is [IP Address]:[Connection Port].

Preview - Click Preview to see the view of all the Web Camera sites you set in Remote Site.

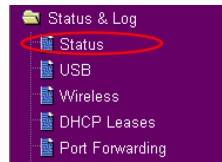
Remote Monitor Setting	
This function allows you to monitor up to 6 Web Cameras in your LAN. Please enter the IP addresses of the wireless routers which connect with Web Camera. If you want to expose these web camera to Internet, please set up virtual server for each HTTP port and ActiveX port manually.	
Remote Control Mode:	LAN Only <input type="button" value="Preview"/>
Remote Site 1:	192.168.123.1:7788
Remote Site 2:	192.168.123.1:7777
Remote Site 3:	192.168.1.1:7777
Remote Site 4:	
Remote Site 5:	
Remote Site 6:	
<input type="button" value="Restore"/> <input type="button" value="Finish"/> <input type="button" value="Apply"/>	

5) Sharing USB printer

You can connect a compatible USB printer to the USB2.0 port of WL-500gP to share the printer with your LAN users. Follow the procedures below to setup your computers to utilize the printer server function of WL-500gP.

Installing USB printer

Plug your USB printer to the USB2.0 port on WL-500gP rear panel. To verify whether your printer is properly installed and to WL-500gP Wireless router, click **Status & Log** -> **Status**. If **Printer Model** is correct and **Printer Status** is **On-Line**, you can share this printer within your LAN.



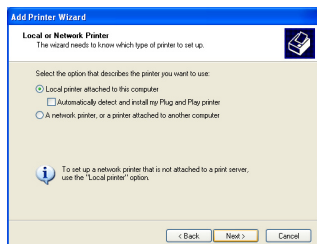
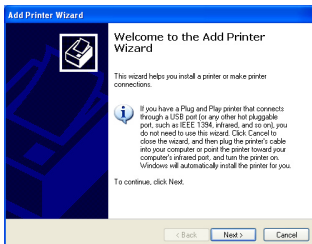
Note: Visit ASUS Website for compatible printer vendor and models.

Printer	
Printer Model:	EPSON Stylus Photo R210
Printer Status:	On-Line
User:	
Action:	<input type="button" value="Remove"/>

Setting up printer client under Windows XP

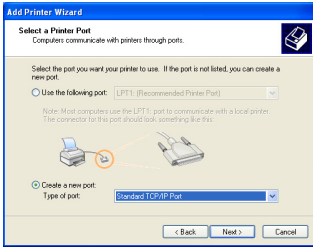
Follow the steps below to install network printer on your clients.

1. Run Add Printer Wizard from **Start -> Printers and Faxes -> Add a printer.**
2. Select **Local printer attached to this computer** and click **Next.**

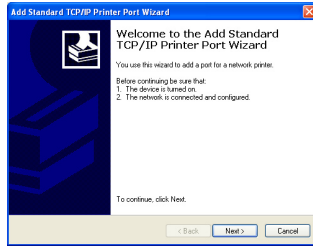




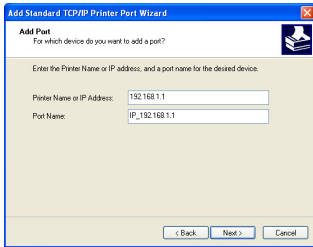
3. Select **Create a new port** and set Type of port to **Standard TCP/IP Port**, then click **Next**.



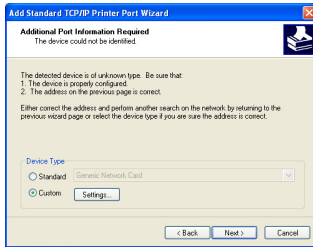
4. Click **Next** to setup TCP/IP port for accessing the network printer.



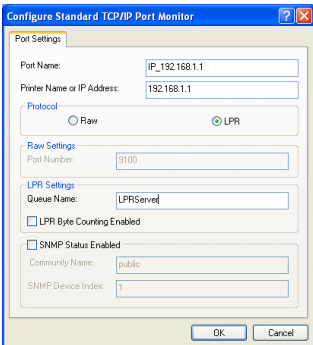
5. Input the IP address of WL-500gP in the **Printer Name or IP Address** field and click **Next**.



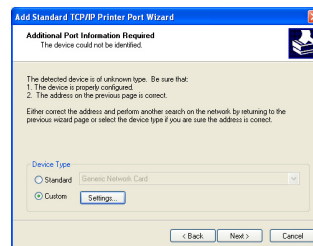
6. Select **Custom** and click **Settings...**



7. Set **Protocol** to **LPR** and type **LPRServer** in **Queue Name** field. Click **Next** to continue.

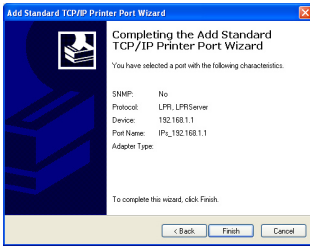


8. Press **Next** to finish standard TCP/IP port setting.

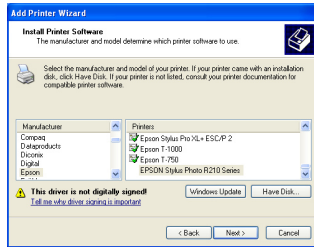




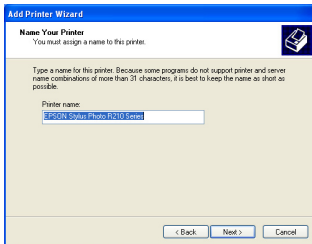
- 9. Press **Finish** to complete the settings and return to Add Printer Wizard.



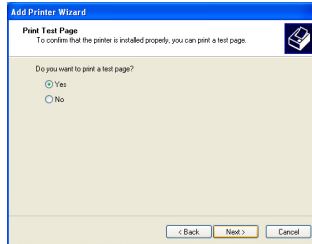
- 10. Install printer driver from the vendor-model list. If your printer is not in the list, click **Have Disk** to manually assign the location of driver.



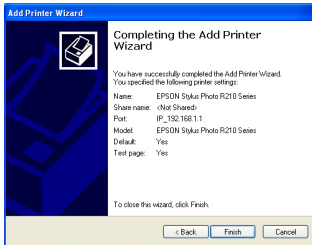
- 11. Click **Next** to accept the default name for the printer.



- 12. Select **Yes** to print a test page. Click **Next** to print.



- 13. The installation is complete. Click **Finish** to quit the Add Printer Wizard.



Note: If you have already installed the printer locally on your computer, right click the printer icon and select **Property -> Port** tab to add a standard TCP/IP port. Click **Add Port** then select **Standard TCP/IP Port** and click **New Port** button. Refer to step 5-8 for setting procedures.



Note: If you use Windows® 98 or ME which does not support Standard TCP/IP port, you need to use Remote Port which is supported by WL-500gP.

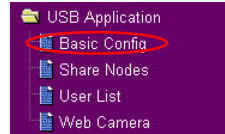


6) Playing stream media on Xbox360

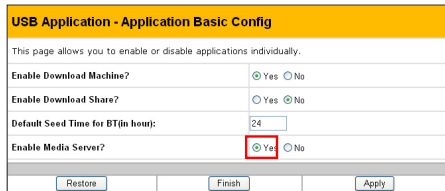
If you have a set of Xbox360, you can connect it to WL-500gP and play the media files stored in the hard disk on your television! To use this function, make sure you have installed a wireless card on your Xbox360 and enabled Media Server function on your WL-500gP.

Enable Media Sever on WL-500gP

1. Click **Basic Config** page in USB Application folder.



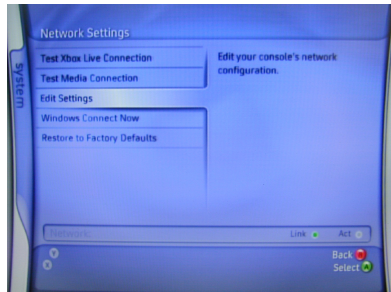
2. Select **Enable Media Sever** and press **Apply**. WL-500gP is ready to share the media files stored in the USB hard disk.



Note: Before connection, access the USB hard disk from My Network Place and copy your music to **/Music** directory and photos to **/Photo** directory.

Playing media files on Xbox360

1. Open Xbox360 and enter **System -> Edit Settings** configuration page to setup wireless network connection.



2. Set **IP Settings** to **Automatic** and make sure Xbox360 gets a valid IP address.





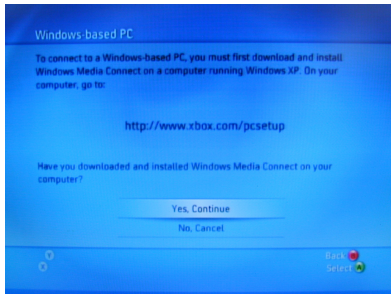
- To play music from the USB hard disk, select **Media** page -> **Music**.



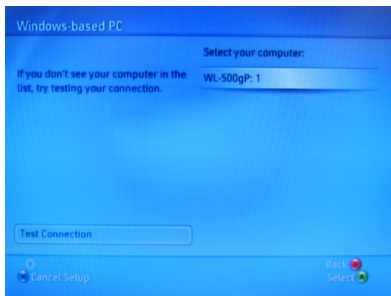
- Select **Computer**.



- Select **Yes, continue** when prompted to install Windows Media Connect on your PC.



- Xbox360 automatically searches and find the WL-500gP. Select WL-500gP to establish wireless connection.

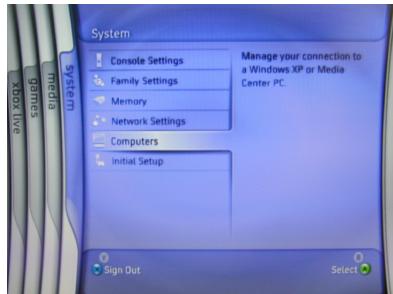




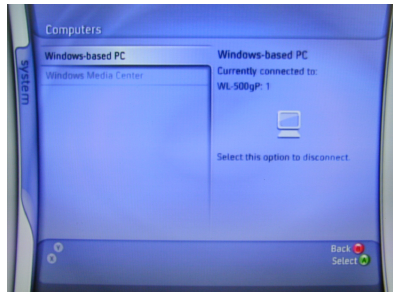
7. Select Music folder in the hard disk and browse through the music list. Select the music you want to play.



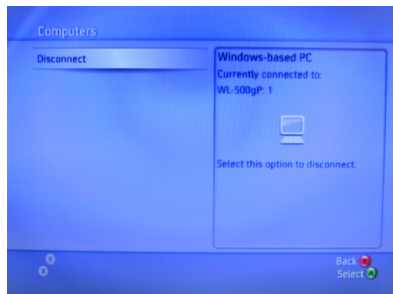
8. To disconnect from WL-500gP, enter **System** page and select **Computers**.



9. Select **Windows-based PC**.The screen displays the currently connected PC.



10. Select **Disconnect**.

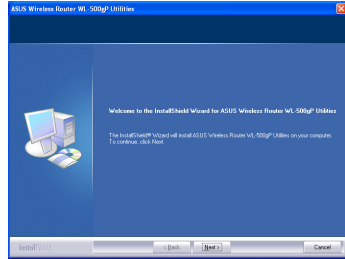
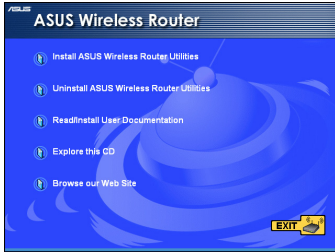




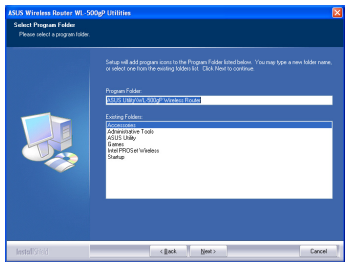
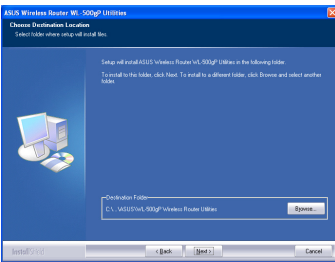
6. Setting up using ASUS utility

1) Utility Installation for WL-500gP

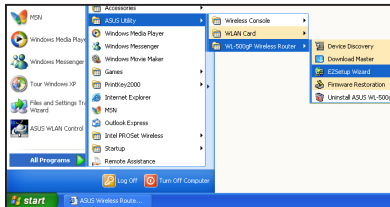
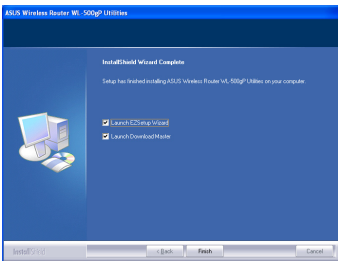
1. Click **Install ASUS Wireless Router Utilities** to run the setup installation program.
2. Click **Next** to continue.



3. Click **Next** to install the utility in the designated location.
4. Select a program folder and click **Next**.



5. Press **Finish** to quit the installation program.
6. Open the **EZSetup Wizard**.

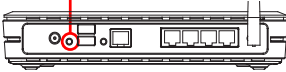




2) EZSetup

Wireless LAN setup will complete in two easy steps. First open the EZSetup utility from Start menu, then push the EZSetup button on the rear panel for 3 seconds.

- 1) Push **EZSetup** over 3 sec. and release.



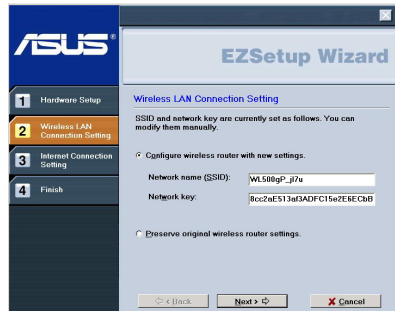
1) If the setup button is pushed without running the EZsetup wizard utility, the PWR indicator will flash and Internet connections will pause for a short period but will then return to normal operation without change.

2) To use EZSetup, we recommend using an ASUS wireless adapter such as WL-106gM, WL-100gE, and WL-169gE.

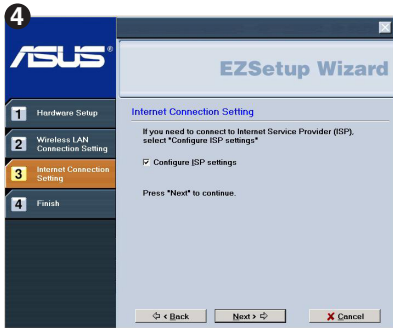


Click the **EZSetup** button in the utility.

Note: Use EZSetup Wizard with one wireless client at a time. If the wireless client computer cannot discover the wireless router while in EZSetup mode, please shorten the distance between the client and the router.



Wireless settings, including network name and network keys, are generated automatically. You can modify these settings manually. Note if your wireless router is configured before, select **Preserve original wireless router settings** to use the current value. Click **Next** to continue.



If you need to configure the ISP settings for your wireless router, select **Configure ISP settings**, click **Next** and follow the instructions to complete the settings.



Setup is complete, press **Print/Save Wireless LAN Settings** button for future reference. Click **Finish** to exit the EZSetup utility.



7. Troubleshooting

Cannot access to web browser for router configuration



1. Open a web browser and open "Internet Options" dialog box.
2. Click on "Delete Cookies" and "Delete Files".

Cannot Establish Connection via Wireless

Out of Range:

- Put the router closer to the wireless client.
- Try to change the channel setting.

Authentication:

- Use wired connection to connect to router.
- Check the wireless security setting.
- Do the hard reset on the wireless router by pressing the Reset button on the rear panel for more than 5 seconds.

Couldn't find the router:

- Do the hard reset on the wireless router by pressing the Reset button on the rear panel for more than 5 seconds.
- Check the setting in the wireless adapter such as SSID and encryption setting.

Cannot get access to the Internet via wireless LAN adapter

- Move the router closer to the wireless client.
- Check whether the wireless adapter is connected to the correct AP.
- Check whether the wireless channel in use conforms to the channels available in your country/ area.
- Check encryption setting.
- Check whether the ADSL or Cable connection is correct.
- Retry using another Ethernet cable.



Internet is not accessible

- Check the lights on ADSL modem and the Wireless Router
- Check whether the "WAN" LED on the Wireless Router is ON. If the LED is not ON, change the cable and try again.

When ADSL Modem "Link" light is ON (not blinking), this means Internet Access is Possible.

- Restart your computer.
- Refer to the Quick Setup Guide of the wireless router and reconfigure the settings.
- Check whether the WAN LED on the router is ON or not.
- Check wireless encryption settings.
- Check whether the computer can get the IP address or not (via both wired network and wireless network).
- Make sure your Web browser is configured to use the local LAN, and is not configured to use a proxy server.

If the ADSL "LINK" light blinks continuously or stays off, Internet access is not possible - the Router is unable to establish a connection with the ADSL network.

- Make sure your cables are all correctly connected .
- Disconnect the power cord from the ADSL or Cable modem, wait a few minutes, then reconnect the cord.
- If the ADSL light continues to blink or stays OFF, contact your ADSL service provider.

Network name or encryption keys are forgotten

- Try to setup the wired connection for setup the wireless encryption again.
- Do the hard reset on the wireless router by pressing the Reset button on the rear panel for more than 5 seconds.

How to reset to defaults

The following are factory default values. If you push the Restore button on the back of the ASUS Wireless Router for over 5 seconds, or click the "Restore" button on the "Factory Default" page under "Advanced Setup", the following default settings overwrite the old settings on your wireless router.

User Name:	admin	Subnet Mask:	255.255.255.0
Password:	admin	DNS Server 1:	192.168.1.1
Enable DHCP:	Yes (if plug in Wan cable)	DNS Server 2:	(Blank)
IP address:	192.168.1.1	SSID:	default
Domain Name:	(Blank)		



8. Appendix



FCC Warning Statement

This device complies with Part 15 of the FCC Rules. Operation is subject to the following two conditions:

- (1) this device may not cause harmful interference, and
- (2) this device must accept any interference received, including interference that may cause undesired operation.

This equipment has been tested and found to comply with the limits for a class B digital device, pursuant to part 15 of the FCC Rules. These limits are designed to provide reasonable protection against harmful interference in a residential installation.

This equipment generates, uses and can radiate radio frequency energy and, if not installed and used in accordance with the instructions, may cause harmful interference to radio communications. However, there is no guarantee that interference will not occur in a particular installation. If this equipment does cause harmful interference to radio or television reception, which can be determined by turning the equipment off and on, the user is encouraged to try to correct the interference by one or more of the following measures:

- Reorient or relocate the receiving antenna.
- Increase the separation between the equipment and receiver.
- Connect the equipment into an outlet on a circuit different from that to which the receiver is connected.
- Consult the dealer or an experienced radio/TV technician for help.



CAUTION:

Any changes or modifications not expressly approved by the party responsible for compliance could void the user's authority to operate the equipment.

Prohibition of Co-location

This device and its antenna(s) must not be co-located or operating in conjunction with any other antenna or transmitter

Safety Information

To maintain compliance with FCC's RF exposure guidelines, this equipment should be installed and operated with minimum distance 20cm between the radiator and your body. Use on the supplied antenna.

Declaration of Conformity for R&TTE directive 1999/5/EC

Essential requirements – Article 3



Protection requirements for health and safety – Article 3.1a

Testing for electric safety according to EN 60950-1 has been conducted. These are considered relevant and sufficient.

Protection requirements for electromagnetic compatibility – Article 3.1b

Testing for electromagnetic compatibility according to EN 301 489-1 and EN 301 489-17 has been conducted. These are considered relevant and sufficient.

Effective use of the radio spectrum – Article 3.2

Testing for radio test suites according to EN 300 328- 2 has been conducted. These are considered relevant and sufficient.

CE CE Mark Warning



This is a Class B product, in a domestic environment, this product may cause radio interference, in which case the user may be required to take adequate measures.